



### 2/9 Bon-Mace Close Berkeley Vale NSW

Don't miss this opportunity to secure a well-appointed industrial unit in one of Berkeley Vale's most sought-after locations. Offering approximately 286sqm of internal space, this property is ideal for a range of industrial, warehousing, or light manufacturing uses.

Key features include:

- Generous internal clearance ranging from 5.87m to 7.1m (approx.)
- Enclosed storeroom and dedicated workshop area
- Open mezzanine level with secure gate access
- Separate archive room for additional storage
- Fully enclosed air-conditioned office/admin space (approx. 57sqm) featuring suspended ceilings and flush-mounted fluorescent lighting

[For full version visit the website](https://www.whitemanproperty.com.au/sale/nsw/central-coast-region/berkeley-vale/commercial/industrial/8326798)

**Type**

: Industrial

**Price**

: Contact Agent

**Building Size**

: 287 sqm

**View**

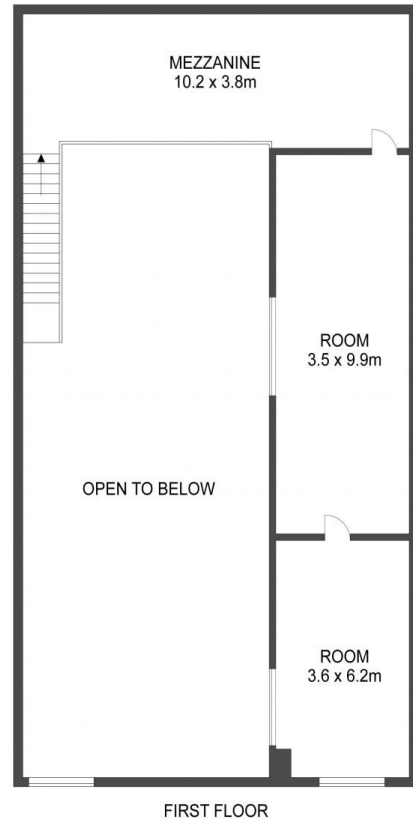
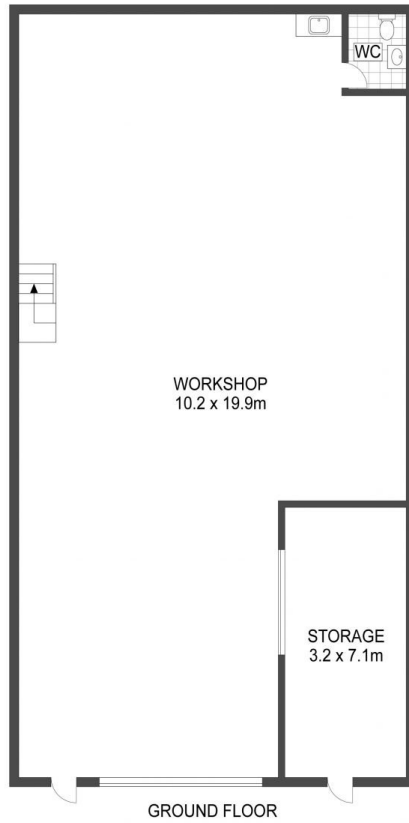
: <https://www.whitemanproperty.com.au/sale/nsw/central-coast-region/berkeley-vale/commercial/industrial/8326798>



**Phoebe Chaseling**  
02 4384 1349



**Brian Whiteman**  
02 4384 1349



APPROX. INT: 287m<sup>2</sup>



THE INFORMATION CONTAINED IN THIS DOCUMENT HAS BEEN PROVIDED BY THIRD PARTIES. WHITEMAN PROPERTY HAS NOT CHECKED THE INFORMATION AND MERELY PASSES IT ON, NOT HAVING A BELIEF ONE WAY OR THE OTHER AS TO ITS ACCURACY. INTERESTED PARTIES SHOULD MAKE AND RELY UPON THEIR OWN ENQUIRIES.



**2/9 Bon-mace Close, Berkeley Vale**

WHITEMAN  
PROPERTY