



**28/7 Nowra Hill Road South Nowra NSW**

**2** 

- \* Premium Quality Built Concrete Warehouse + Mezzanine - 190sqm
- \* 155sqm Ground Floor + 35sqm mezzanine
- \* High Clearance with Automatic Roller Door
- \* Includes Kitchenette + Amenities + Shower
- \* NBN + 3 Phase Power
- \* Close to Princes Highway and South Nowra Large Format Retail Precinct
- \* Ample Visitor Parking both Onsite and in Street
- \* Suspended Concrete Mezz easily Converted to Office Space
- \* Landlord open to providing full Office Fit out dependent on Terms
- \* Includes 2 Exclusive Parking spaces

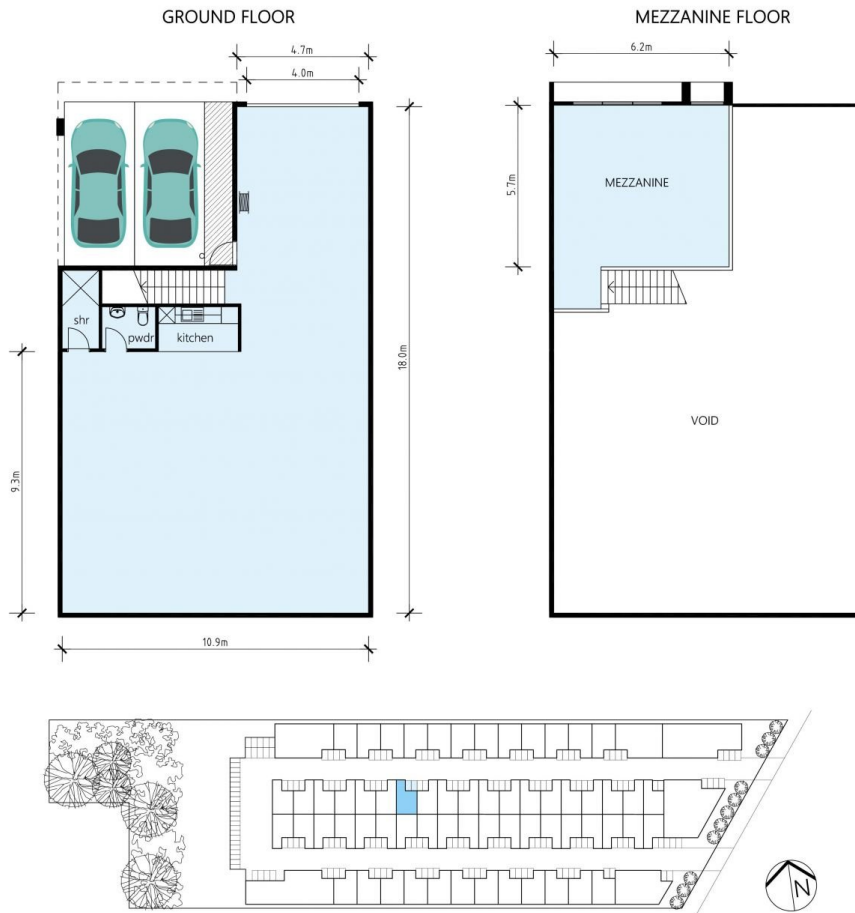
**Type** : Industrial  
**Price** : Contact Agent  
**Building Size** : 190 sqm  
**View** : <https://www.whkcommercial.com.au/lease/nsw/shoalhaven/south-nowra/commercial/industrial/8370892>



**Tony Moschella**  
02 4229 6640



**Harry Stefanou**  
02 4229 6640



## Warehouse Unit 28

Ground Floor Area:	159.3m <sup>2</sup>
Mezzanine Floor Area:	35.4m <sup>2</sup>
Total:	194.7m <sup>2</sup>
Door Height:	4.5m
Average Unit Height:	6m
Carspaces:	2

**NOWRA BUSINESS PARK**  
 7 Nowra Hill Rd South Nowra  
[nowrabusinesspark.com.au](http://nowrabusinesspark.com.au)

**Note:** All areas, dimensions, heights and widths shown are approximate only. All areas shown are based upon the Property Council of Australia (PCA) methods of measurement guidelines (March 1997 revision) for gross lettable area (GLA).