



## 806 Mate Street North Albury NSW

16 

Dixon Commercial Real Estate are pleased to offer for sale this main road commercial building ready to own and occupy or invest.

This well positioned 1,530 square metre corner site is positioned in a high traffic area with easy access to main arterial roads and the Hume Freeway. With dual access to the site this 840 square metre building includes showroom, office, amenities and warehouse/storage.

Key features of the property include:

- Vacant possession
- Zoned R1 with current use being Retail
- 16 on-site car parking spaces
- Current occupant has over 20 years of trade at this location.

For further information please contact the below agents.

[For full version visit the website](https://www.dixoncre.au)

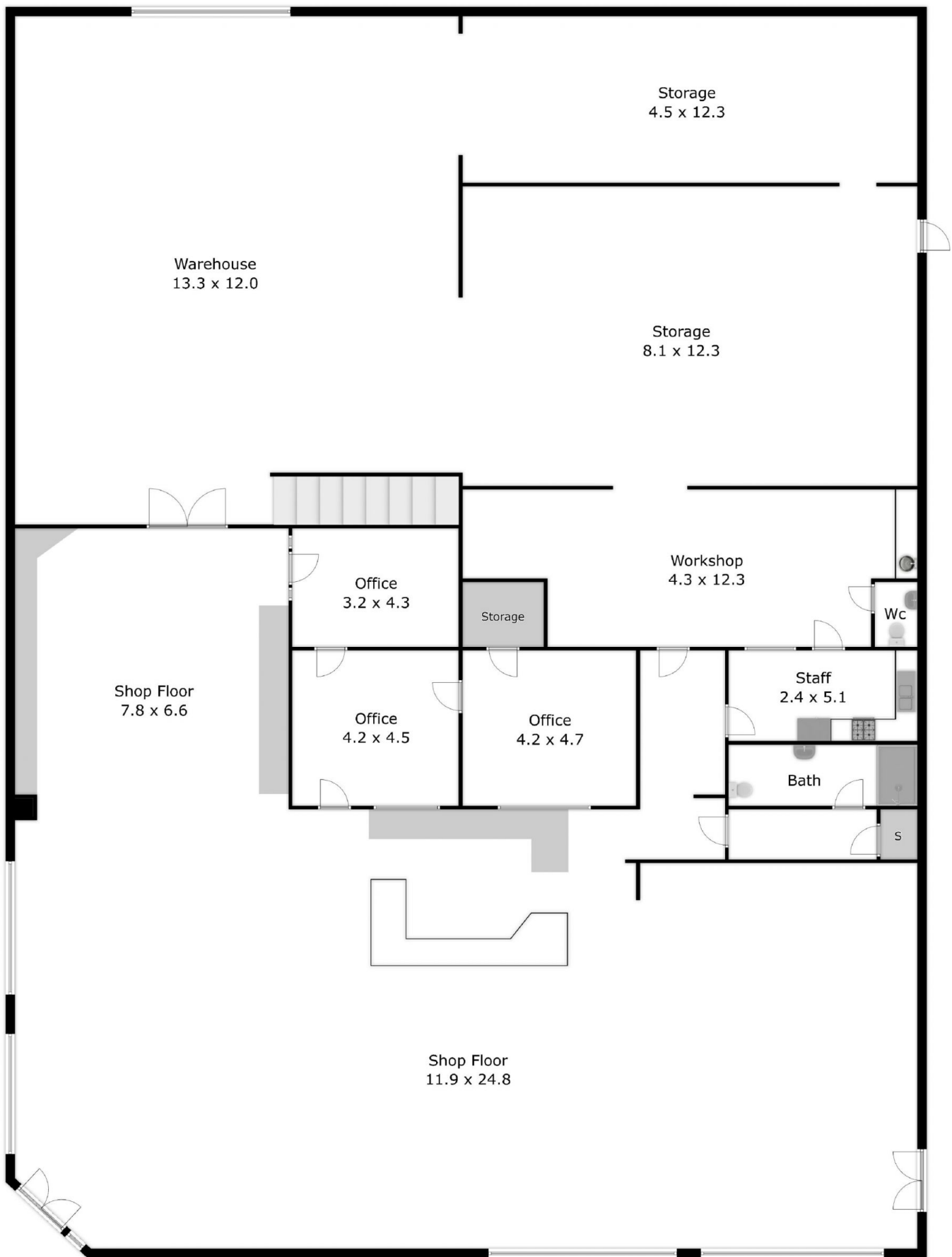
<b>Type</b>	: Retail
<b>Price</b>	: Contact Agent
<b>Building Size</b>	: 840 sqm
<b>Land Size</b>	: 1530 sqm
<b>View</b>	: <a href="https://www.dixoncre.au/sale/nsw/murray-region/north-albury/commercial/retail/8260336">https://www.dixoncre.au/sale/nsw/murray-region/north-albury/commercial/retail/8260336</a>



**Chris Brown**  
02 6055 0000



**Oscar Dixon**  
02 6055 0000



APPROX. INTERIOR FLOOR AREA  
808.3 sq. m

Please note: This plan has been generated for advertising only  
and may not be exact.

Interested parties are to do their due diligence  
to verify any information provided in this plan.