



2E/200-208 North Street Albury NSW

Dixon Commercial Real Estate are pleased to offer for lease this functional industrial space, available from June or sooner if required.

Superbly positioned on North Street with easy access to the Hume Freeway and Central Albury, this warehouse provides a total lettable area of approximately 1,000 square metres.

Other features include:

- High clearance sliding door
- Separate amenities
- Affordable rent
- Zoned E4 - General Industrial

For more information or to arrange an inspection, please contact the below agents.

[For full version visit the website](https://www.dixoncre.au)

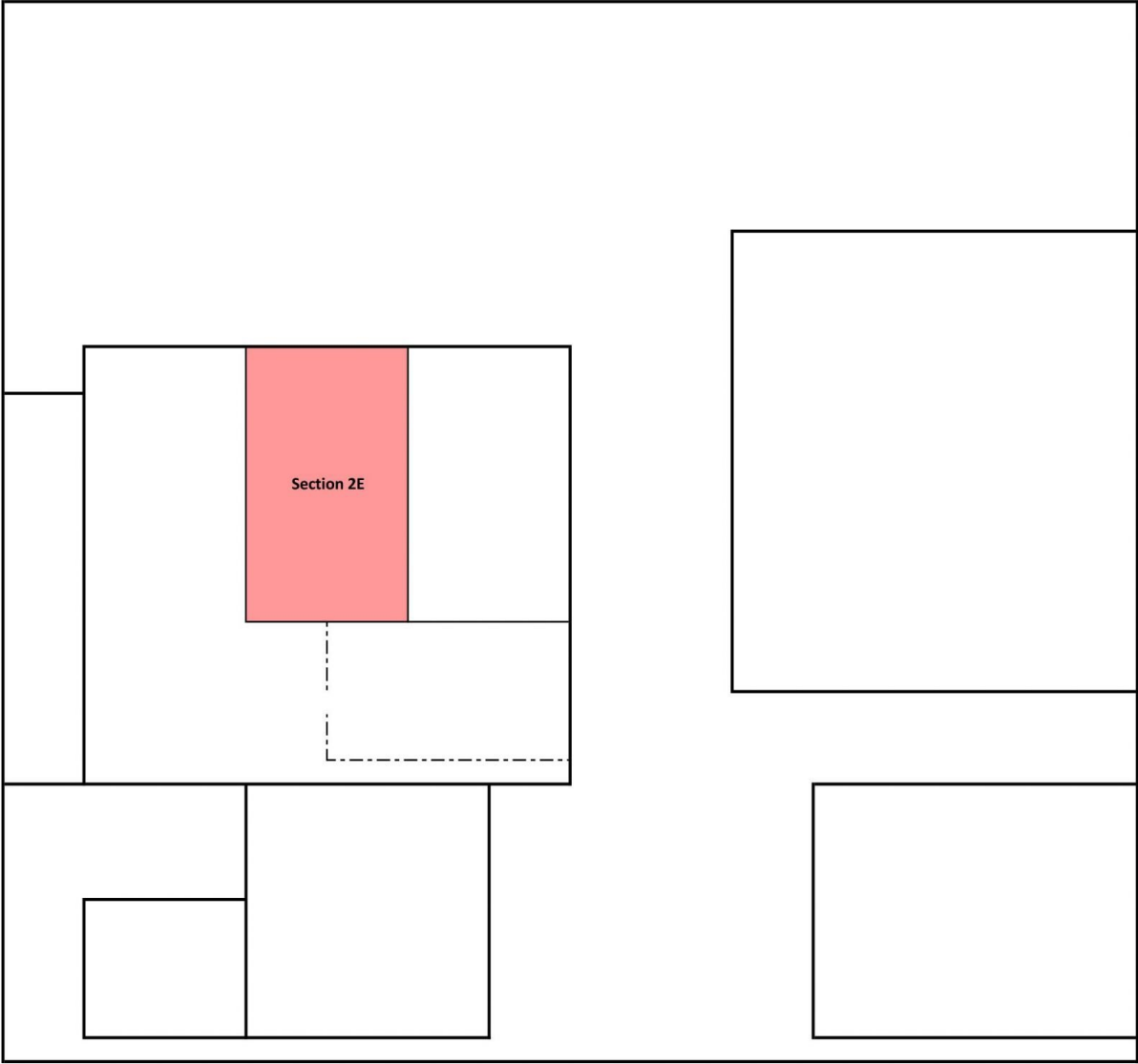
Type	: Industrial
Price	: Contact Agent
Building Size	: 1000 sqm
View	: https://www.dixoncre.au/lease/nsw/murray-region/albury/commercial/industrial/8345604



Oscar Dixon
02 6055 0000



Chris Brown
02 6055 0000



200-208 North Street Albury