

11/2 Indigo Loop Yallah NSW

2 

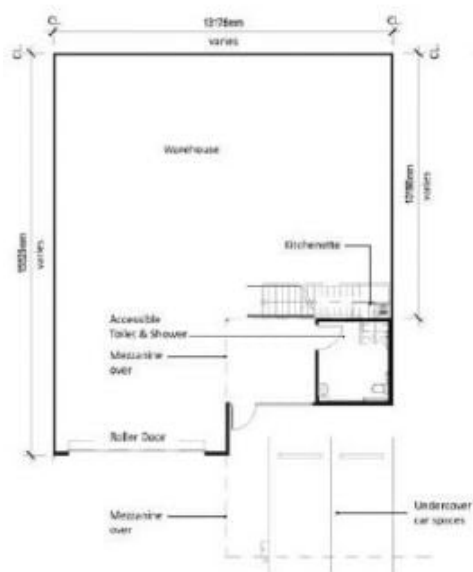
- * Unit 11 - 251 sqm Warehouse & Mezzanine
- * Modern tilt up concrete construction with internal mezzanine
- * Each Unit incorporates amenities inclusive of shower facilities and 2 undercover car spaces
- * Ample visitor parking as well as excellent truck access and manoeuvrability
- * Ideal location just minutes from Yallah Interchange and Albion Park Rail Bypass
- * Complete and ready to move in or invest.

Type	: Industrial
Price	: Contact Agent
Building Size	: 251 sqm
View	: https://www.whkcommercial.com.au/sale/nsw/wollongong-illawarra/yallah/commercial/industrial/8315872



Harry Stefanou
02 4229 6640

SIMILAR UNIT #: 02, 03, 07, 08, 09, 10, 11, 12, 13, 15, 16, 17, 18, 19, 20, 21, 22, 23, 24, 26, 27, 28, 29, 30, 31



Ground Floor

Note: width and depth of space varies, refer to site plan for reference.

Please note the Architectural Plans were produced prior to completion of construction and is illustrative only. Changes may be made during construction. Dimensions, the layouts, finishes and specifications are subject to change without notice in accordance with the provisions of the Contract of Sale.



Typical Section

Note: Ceiling height varies due to undulating site topography. Minimum 2.7m floor to ceiling.



Mezzanine

